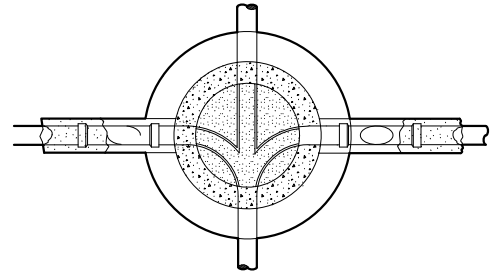
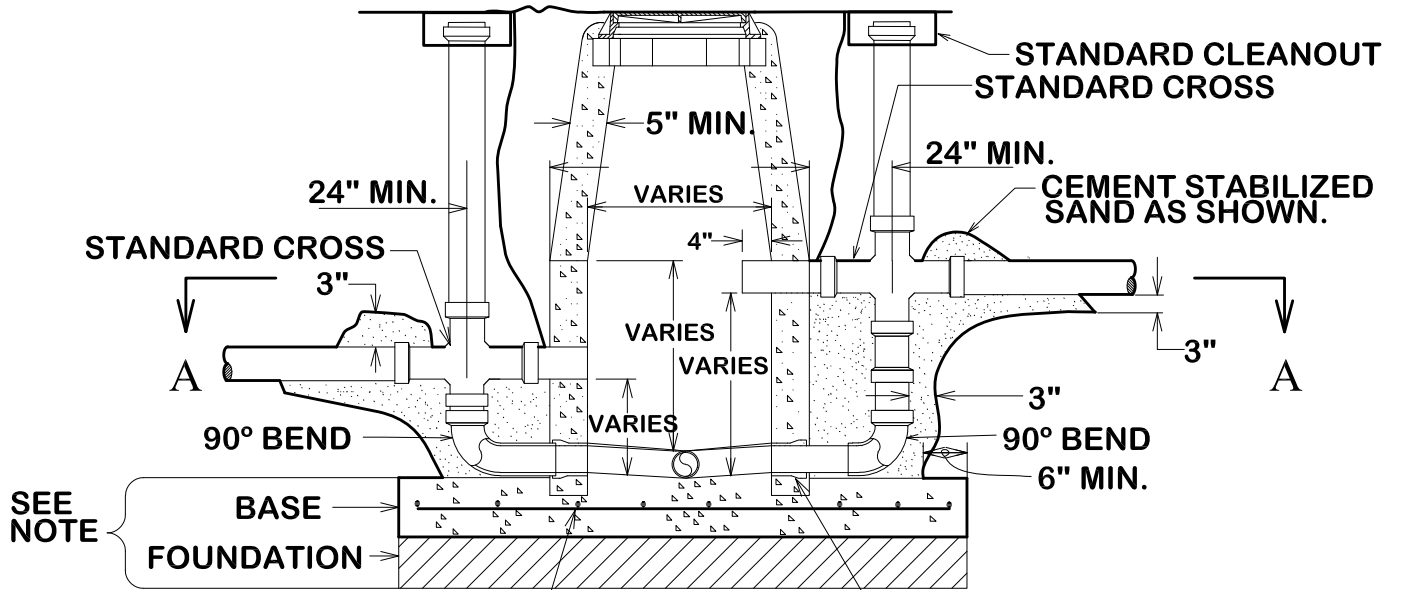


**NOTE: MANHOLE BASE SHALL BE PLACED ON FIRM SUBGRADE. ADDITION OF CEMENT STABILIZED SAND OR GRAVEL MAY BE REQUIRED TO STABILIZE FOUNDATION.**



SECTION A - A



**#4 BARS, 8" O.C.E.W. -- DEPTHS GREATER THAN 12 FEET WILL REQUIRE 2 MATS OF REINFORCING STEEL IN THE BASE**

**WATERSTOP-PIPECONX MANHOLE ADAPTER SEAL, OR APPROVED EQUAL. (2 REQ'D)**

*ONLY WHEN APPROVED BY CITY ENGINEER*



**CITY OF BRYAN**  
*The Good Life, Texas Style.*

# CITY OF BRYAN OUTSIDE DROP MANHOLE

DATE

**FEB. 2021**

**B/CS UNIFIED  
STANDARD DETAIL**

DETAIL NO.

**S2-01**



CITY OF COLLEGE STATION