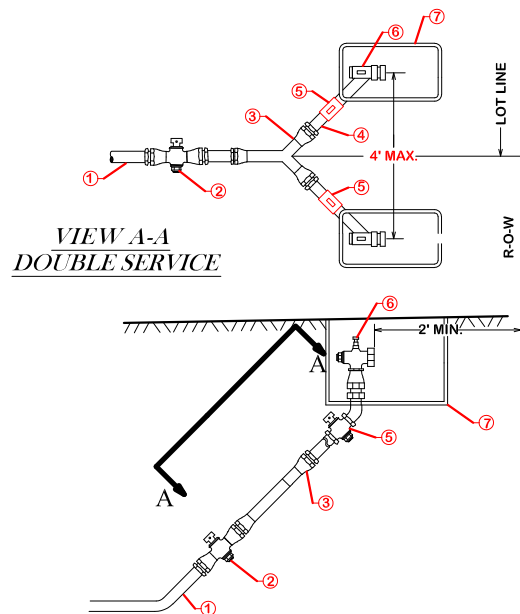


NOTES:

1. ALL CONNECTIONS TO BE COMPRESSION TYPE.
2. MATERIAL USED SHALL BE AS SPECIFIED OR AN APPROVED EQUAL.
3. ALL SERVICE WYES & EXTENSIONS ARE TO BE INSTALLED WITH THE MAIN LINE CONSTRUCTION.

- | |
|---|
| <ol style="list-style-type: none"> ① Service Tubing: Type K Copper - cu - soft - 1.50" ② Ford Ball Valve - B44-666-NL- 1.50" ③ Ford "Y" Branch - Y44-264-NL- 1.50" x 1" x 1" ④ Service Tubing: Type K Copper - soft - 1" ⑤ Ford Ball Valve - B44-444-NL - 1" ⑥ Ford Angle Stop KV43-332W-NL - 1" x 0.75 Meter Nut Swivel ⑦ Concrete Meter Box - Provided by COCS |
|---|



DOUBLE WATER SERVICE RECONNECTION



CITY OF BRYAN
The Good Life, Texas Style.

CITY OF COLLEGE STATION
DOUBLE WATER SERVICE RECONNECTION

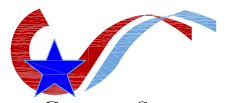
DATE

DECEMBER 2020

**B/CS UNIFIED
STANDARD DETAIL**

DETAIL NO.

W7-04



CITY OF COLLEGE STATION