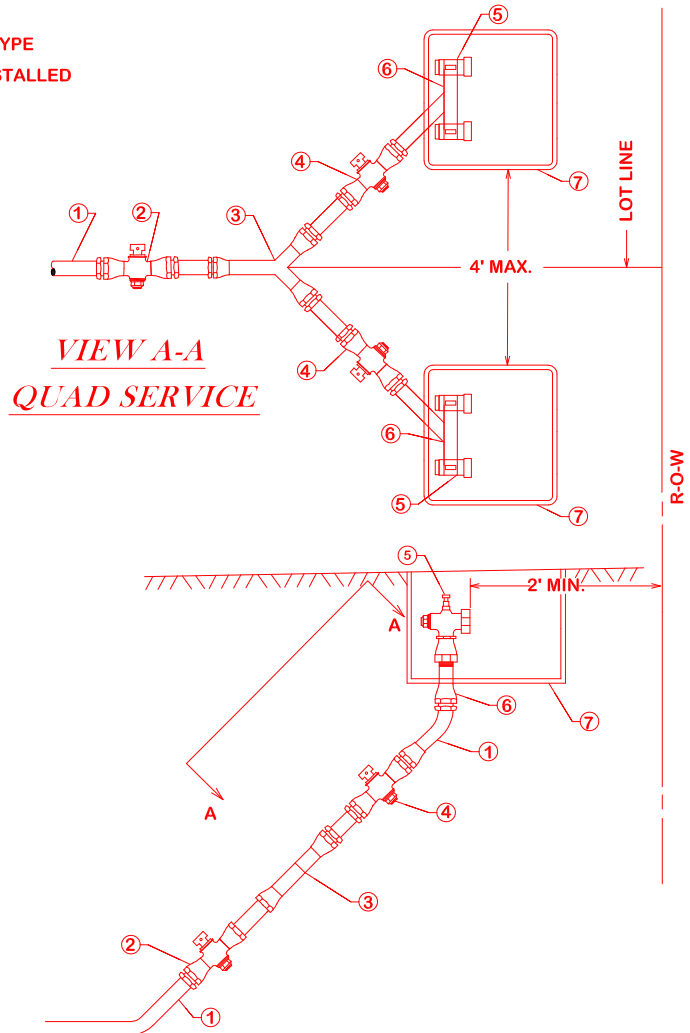


SPECIAL CONDITIONS

1. ALL CONNECTIONS SHALL BE PACK-JOINT COMPRESSION TYPE
2. ALL SERVICE EXTENSIONS/APPURTENANCES ARE TO BE INSTALLED WITH THE MAIN LINE CONSTRUCTION
3. A MAXIMUM OF FOUR ~ 0.75" WATER METERS ARE ALLOWED FOR THIS CONFIGURATION
4. MATERIAL USED SHALL BE AS SPECIFIED OR AN APPROVED EQUAL

- | | |
|---|---|
| ① | Service tubing: Type K copper - soft - 2" |
| ② | Ford Ball Valve - B44-777-NL- 2" |
| ③ | Ford 'Y' Branch - Y44-274-NL- 2" x 1" x 1" |
| ④ | Ford Ball Valve - B44-444-NL- 1" |
| ⑤ | Ford Angle Stop KV13-332W-NL - .75" x .75" Meter Nut Swivel |
| ⑥ | Ford 'U' Branch - U48-43-NL |
| ⑦ | Dual Concrete Meter Box - Provided by COCS |



CITY OF BRYAN
The Good Life, Texas Style.

CITY OF COLLEGE STATION QUAD SERVICE CONNECTION

DATE

DECEMBER 2020

**B/CS UNIFIED
STANDARD DETAIL**

DETAIL NO.

W5-01



CITY OF COLLEGE STATION