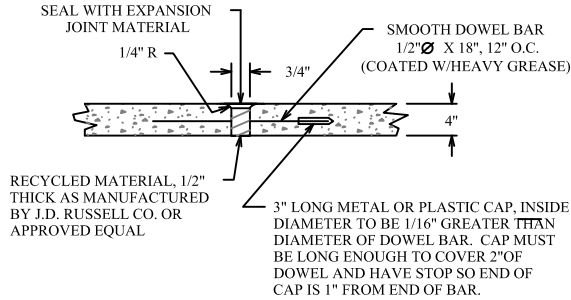
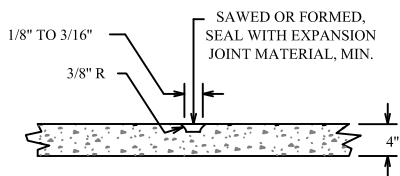


NOTES:

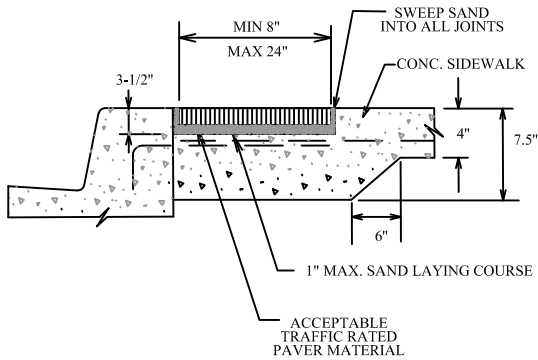
1. SIDEWALK PLACEMENT SHALL BE IN ACCORDANCE WITH B/CS UNIFIED DESIGN GUIDELINES.
2. FINISH: LIGHT BROOM FINISH. JOINTS TO BE TOOLED 1" DEEP AT AN INTERVAL EQUAL TO THE SIDEWALK WIDTH. EXPANSION JOINTS @ 40' O.C., CONTRACTION JOINTS @ 4' O.C.
3. DOWEL IN AND TIE TO ANY CONCRETE STRUCTURE ADJACENT TO SIDEWALK (DRIVEWAY, INLET BOX, CURB, JUNCTION BOX, ETC.) WITH #3 x 12" BARS @ 12" O.C. OR #4 x 12" BARS @ 18" O.C.
4. COMPACTION: COMPACTED SUBGRADE MATERIAL COMPACTED TO A DENSITY AT LEAST 98% OF MAXIMUM DRY DENSITY AS DETERMINED BY PROCTOR COMPACTION TEST ASTM D698 (STANDARD) AND SHALL BE 0-4% WET OF THE OPTIMUM MOISTURE CONTENT
5. A MINIMUM CLEAR PEDESTRIAN WIDTH AS DEFINED BY TAS AND ADA SHALL BE PROVIDED FOR ENTIRE LENGTH OF SIDEWALK.



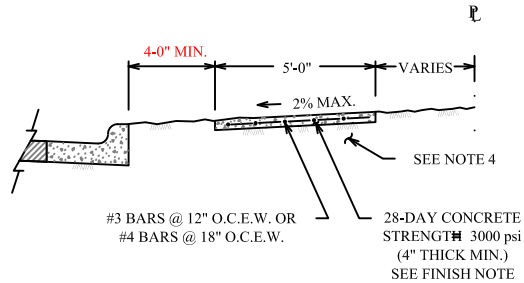
SIDEWALK EXPANSION & CONSTRUCTION JOINT



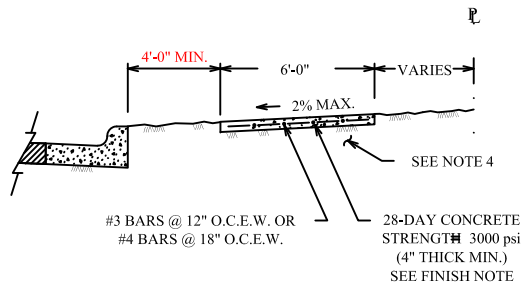
SIDEWALK CONTRACTION JOINT



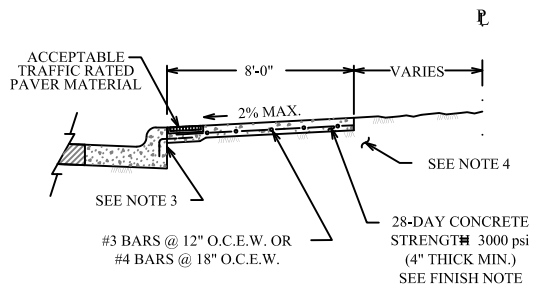
SIDEWALK PAVER SECTION



ALONG LOCAL STREETS



ALONG MINOR COLLECTORS AND LARGER



ALONG MINOR COLLECTORS AND LARGER



CITY OF BRYAN
The Good Life, Texas Style.

CONCRETE SIDEWALK

DATE

DECEMBER 2020

B/CS UNIFIED STANDARD DETAIL

DETAIL NO.

SW1-02



CITY OF COLLEGE STATION