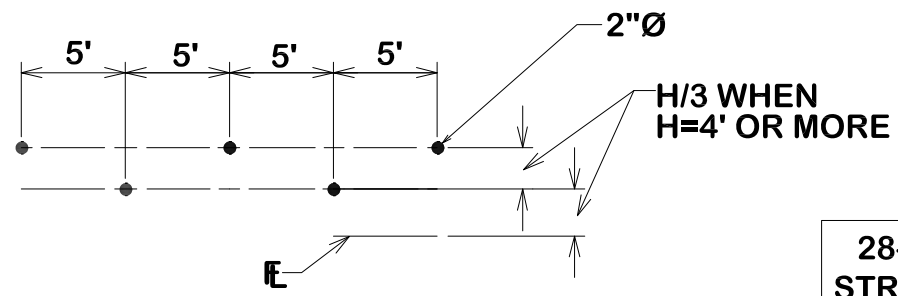


NOTE:
 MIN. 18" TOE WALL TO BE CONSTRUCTED
 AT BEGINNING & END OF CONCRETE
 DITCH CHANNEL & RIP-RAP SECTIONS.



**28-DAY CONCRETE
 STRENGTH = 3000 psi**

WEEP HOLE DETAIL



CONCRETE RIP-RAP

DATE
DECEMBER 2020

**B/CS UNIFIED
 STANDARD DETAIL**

DETAIL NO.
D2-01

