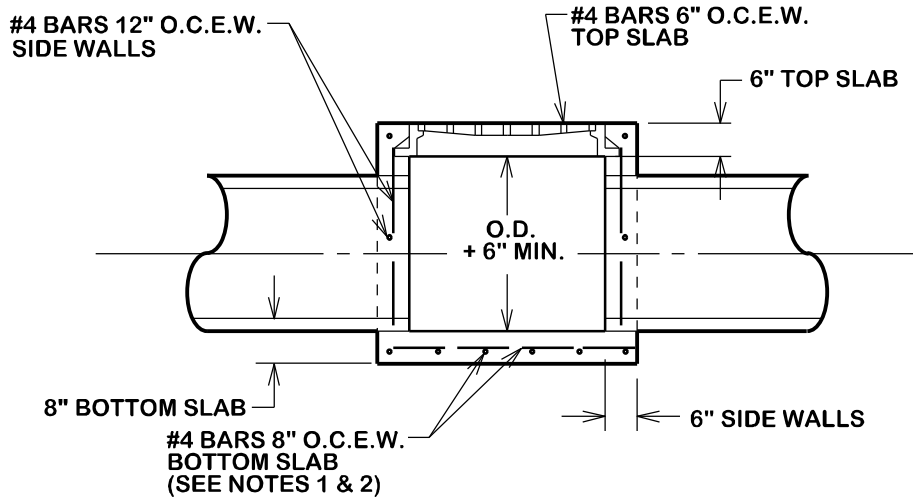


GRATE SHALL BE BICYCLE PROOF.
PEDESTRIAN GRATES SHALL BE
INSTALLED IN SIDEWALK AREA.

PLAN



SECTION A-A

28-DAY CONCRETE STRENGTH = 3000 psi

GENERAL NOTES:

1. BASE THICKNESS AND FOUNDATION SHALL BE AS FOLLOWS:

INLET DEPTH (FT.) <small>(MEASURED FROM FLOWLINE TO FINAL GRADE)</small>	BASE THICKNESS
0 - 12	8"
12 AND OVER	12"

2. DEPTHS GREATER THAN 12' WILL REQUIRE 2 MATS OF REINFORCING STEEL IN THE BASE.



CITY OF BRYAN
The Good Life, Texas Style.

SINGLE GRATE INLET

DATE
AUG. 2012

**B/CS UNIFIED
STANDARD DETAIL**

DETAIL NO.
D1-01



CITY OF COLLEGE STATION