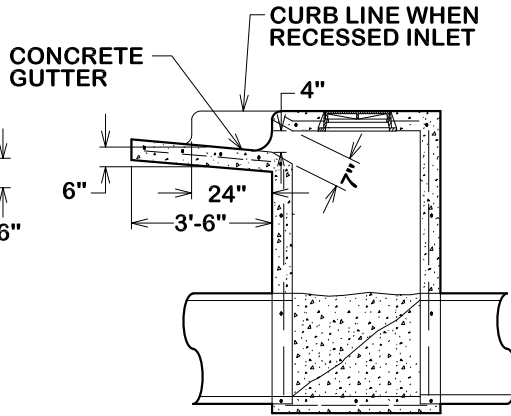


**THROAT DETAIL**



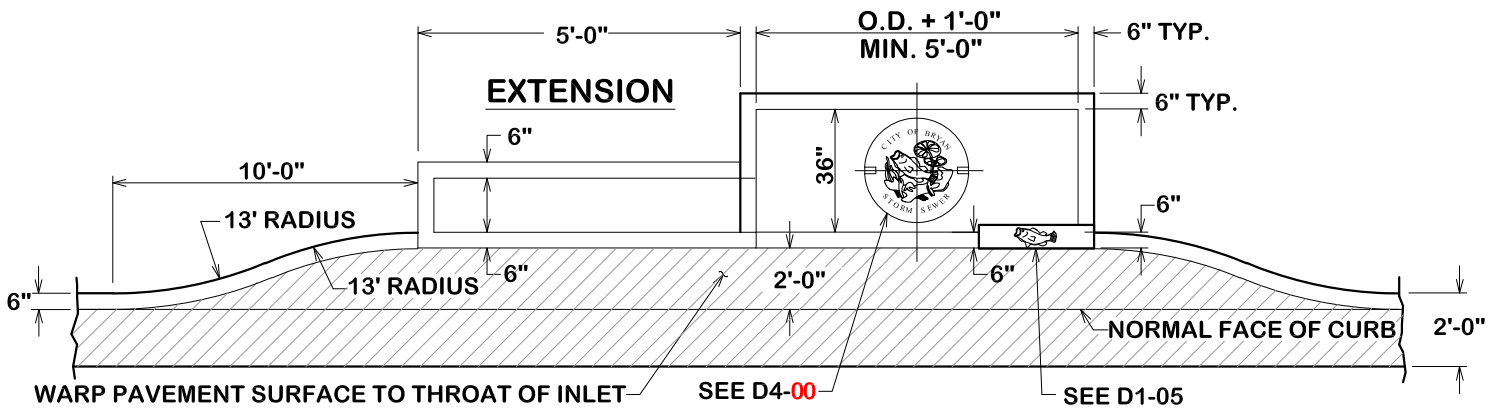
**SECTION A-A**

**GENERAL NOTES:**

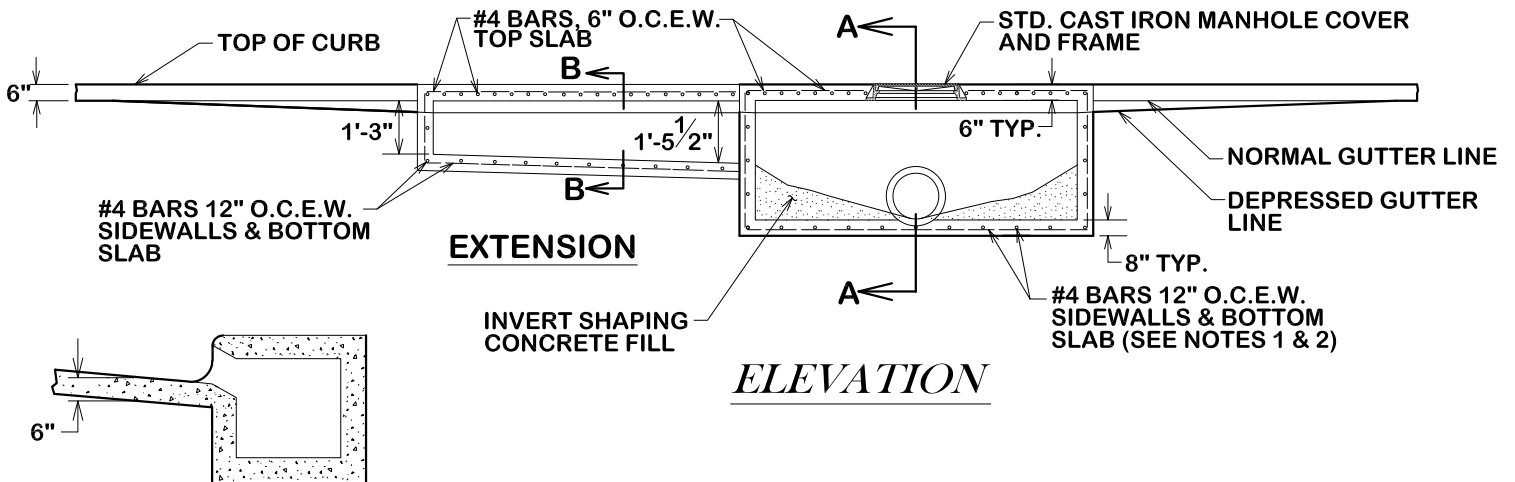
- 1. BASE THICKNESS AND FOUNDATION SHALL BE AS FOLLOWS:

INLET DEPTH (FT.) (MEASURED FROM FLOWLINE TO FINAL GRADE)	BASE THICKNESS
0 - 12	8"
12 AND OVER	12"

- 2. DEPTHS GREATER THAN 12' WILL REQUIRE 2 MATS OF REINFORCING STEEL IN THE BASE.



**PLAN VIEW**



**ELEVATION**

**SECTION B-B**

28-DAY CONCRETE STRENGTH = 3500 psi

 <b>CITY OF BRYAN</b> <i>The Good Life, Texas Style.</i>	<h1>SINGLE RECESSED CURB INLET &amp; CURB INLET W/EXTENSION</h1>		 <b>CITY OF COLLEGE STATION</b>
	DATE <b>AUG 2024</b>	<b>B/CS UNIFIED STANDARD DETAIL</b>	